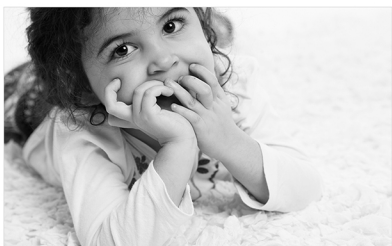


REBECCA
DAWE
PHOTOGRAPHY



*Studio Portrait
Photography*



Families | Couples | Kids | Pets | Parties

SESSION PACKAGE PRICES

DIGITAL / PRINT

£ **95**

Three digital images or three prints (up to 12 x8")

DIGITAL / PRINT

£ **125**

Five digital images or five prints (up to 12 x8")

DIGITAL / PRINT

£ **195**

Five digital images or five prints (up to 12 x8")

Two 12 x8" mounted prints

One 12 x8" studio frame

WALL ART / DIGITAL / PRINT

£ **295**

** Our best seller **

15 x15" framed montage in black or white

Two 12 x8" mounted prints

Twenty digital images

Add on all digital images for £100

and save over £200

WALL ART / DIGITAL / PRINT

£ **495**

Two montage frames or 18 x12" framed prints

in black or white

Four 12 x8" mounted prints

All digital images

WALL ART / DIGITAL / PRINT

£ **695**

Three montage frames or 18 x12" framed prints

Two 12 x8" studio frames in black or white

Four 12 x8" mounted prints

All digital images

PHOTO PARTIES

£ **20** per person

The host receives one mounted 12 x 8" print and each guest will receive one 8 x 6" mounted print.

All digital images from session £125

On-line gallery

Minimum six people

ADD ON'S

extra images £ **20** quote for larger quantities

12 x8" studio frames in black or white £65

Bespoke frame add on from £65

Gift vouchers

All sessions payable on booking

Bespoke packages available P.O.A

WALL ART & ALBUMS

WALL ART

from £ **125**

A selection of wall art to hang and admire

Size	Canvas	Frame
18 x12"	£125	£145
24 x16"	£155	£195
30 x20"	£190	£275
40 x30"	£245	£395

15 x15" FRAMED MONTAGE

£ **175**

5 or 6 Images in a black or white frame



Bespoke frame £65 extra

PANORAMIC WALL ART

from £ **145**

16" Wide £145

25" Wide £180

30" Wide £245



GRAPHISTUDIO ALBUM

£ **295**

30 Images in a Graphistudio album



* Bespoke Framing Price on Request *

TRIO FRAME

from £ **165**

Triple 7 x5" £165

Triple 10 x8" £225

Trio Frame £265



OUR PORTRAIT SERVICE

Visit our modern open plan studio in Burbage, for a contemporary and fresh Studio portrait.

In our studio you may find Grandmas and Granddads, little ones and bumps, maybe even noisy ones and those who like to pose, your pet is more than welcome. Our aim is to capture natural images with an artistic flair. The studio is a relaxed, yet energised environment, which means you feel completely at ease.

We recommend that you wear casual clothes, such as; jeans and t-shirts, so that you feel comfortable. We work with white and dark backgrounds and find that white, black and brightly coloured tops are the best colours to wear.

If you are bringing children and they have a hobby, play a sport or instrument, then it would be great for you to bring along props to the session. Pets are welcome.

Whatever type of sitting you are having with us, we will try to make it as enjoyable and fun for you as possible. We usually allow one hour for the sitting depending on the amount of people and ages of group.

Once your jam-packed sitting is over, you'll be really keen to see what we've captured and within seven days you can. We will be busy working on your images, adding effects and turning some in to black and white. Once they are finished we invite you back to the studio to view and order your pictures.

If for any reason you cannot view your images in the studio, we can upload for a cost of £95 which will come off your order.

Once we receive your order, you then only have to wait approximately two to three weeks for your order to be completed.

Gift vouchers are available for any of our sessions or packages.

*We look forward to speaking to you
Much love from all at Rebecca Dawe Photography*



To book an appointment, call us on 01455 239172

Opening Hours
Sunday/Monday
Tuesday
Wednesday
Thursday/Friday
Saturday

Appointments available
10am - 5pm
10am - 7pm
10am - 5pm
10am - 3pm

1st Floor, Britannia Buildings
Coventry Road, Burbage
Leicestershire, LE10 2HL
Tel: 01455 239172
hello@rebeccadawe.com
www.rebeccadawe.com